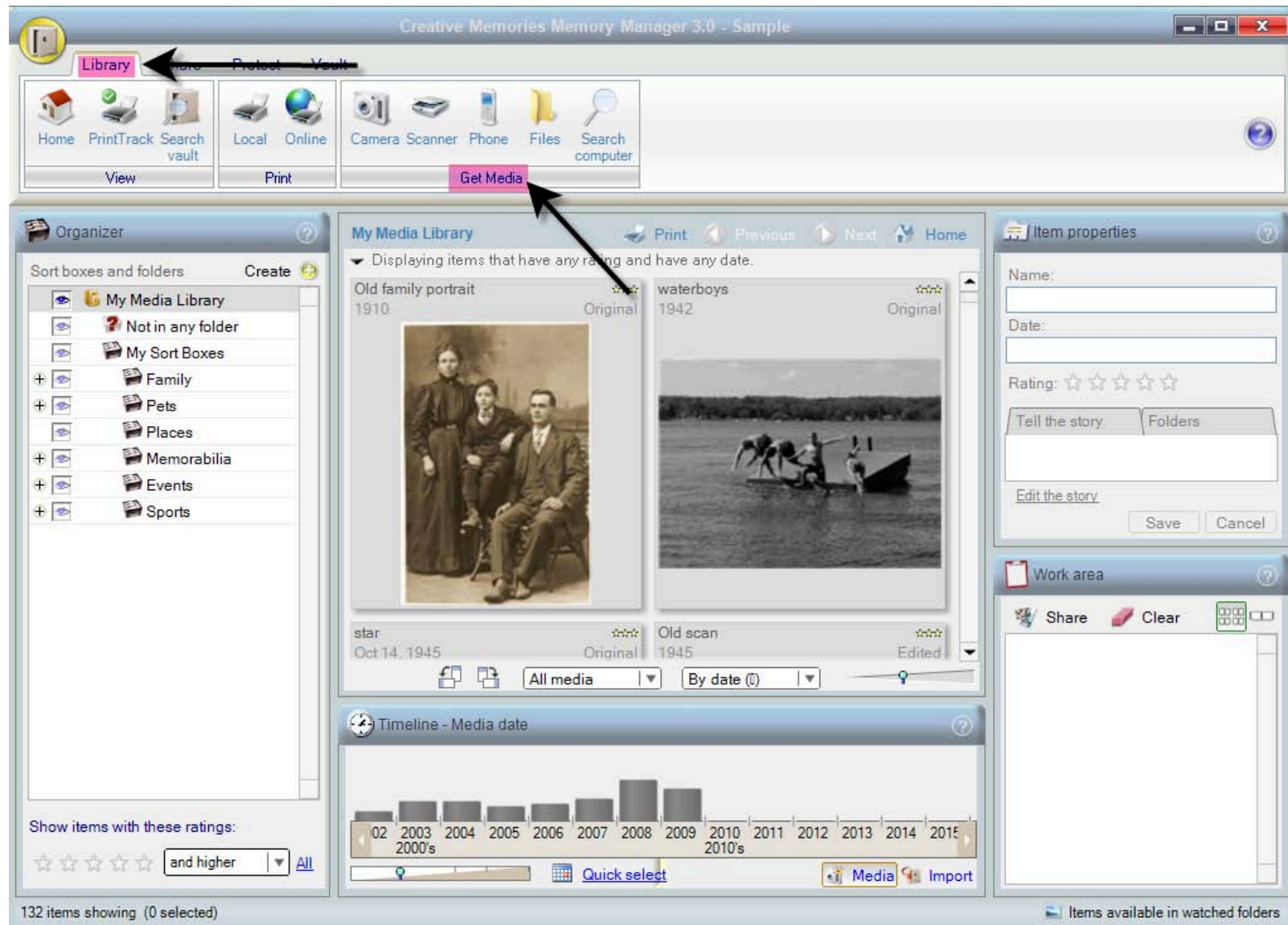
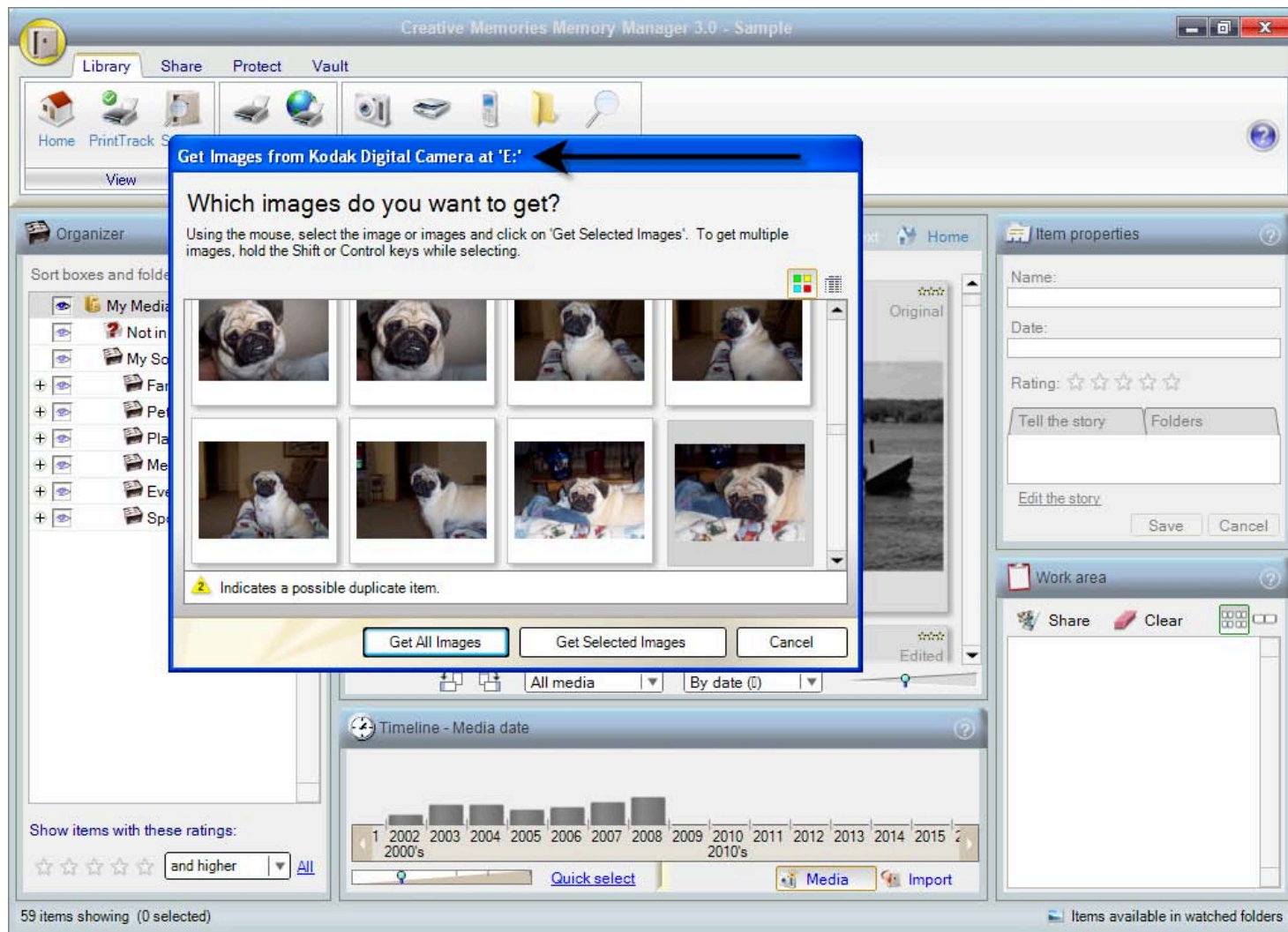


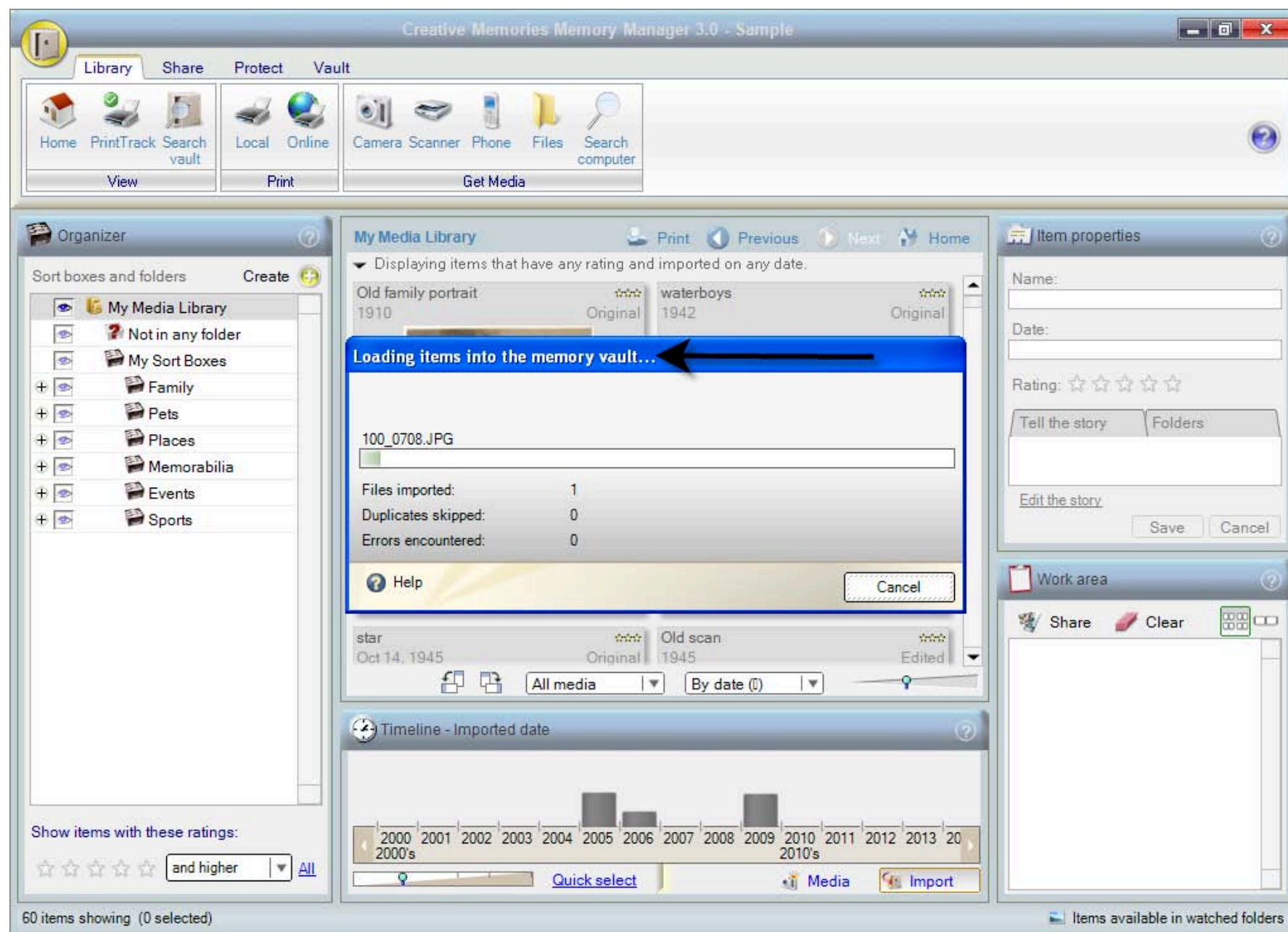
Let's take a look at how to bring files into Memory Manager from your camera. When Memory Manager imports photos from your camera, it copies them and leaves the original files on your camera. Be sure your camera is connected to your computer and it's turned on. Then click on **Camera** in the Get Media section of the Library tab.



A dialog box displays, showing you all the files currently on your camera. If you want all of the photos, click on **Get All Images**. If you'd like to bring only one photo into Memory Manager, you can select it by holding down the CTRL key while clicking on the photo. To select several photos in a row, click on the first photo, then hold down the SHIFT key and click on the last photo in the sequence. Click on **Get Selected Images** to begin the process.



After you've made your selection, the *Loading items into the memory vault* dialog box will display. This may take a few minutes depending on how many files you're importing.



Once the process is complete, the items will be displayed in your Media Library.

