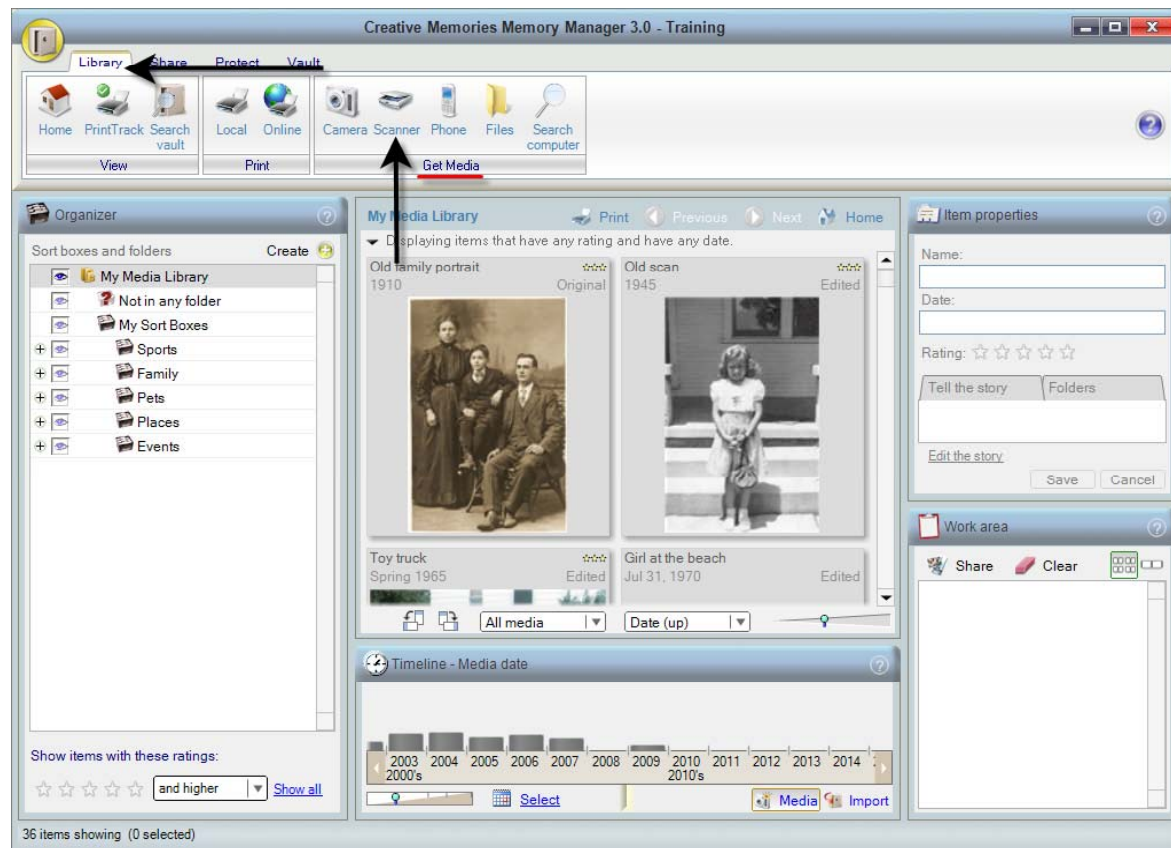


Importing From Your Scanner

You may import images directly from your scanner. Your scanner must be connected to your computer to import. Scanning is a great way to preserve old photos, newspaper clippings, and drawings.

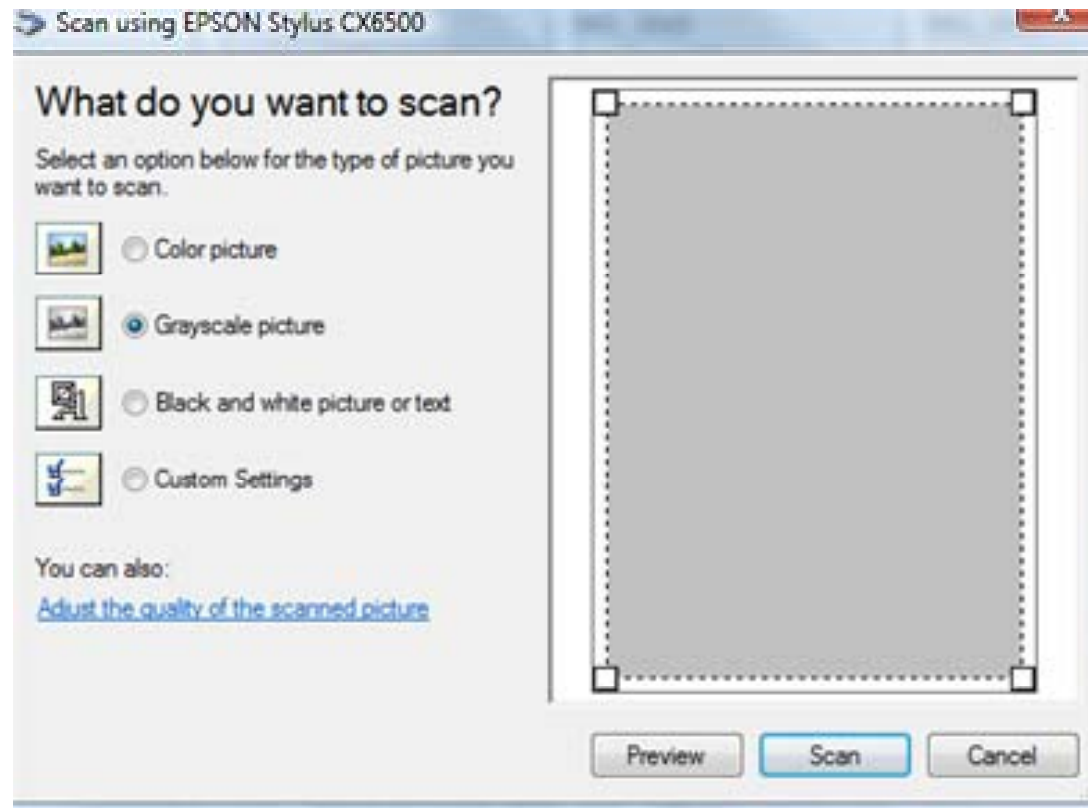
Tip: If you own a high-end scanner, you may want to use the software that accompanied the scanner. High-end scanning software offers more complex options. You may then import the image into Memory Manager by using Importing from a file.

From your Media Library, click on Scanner in the Get Media section.



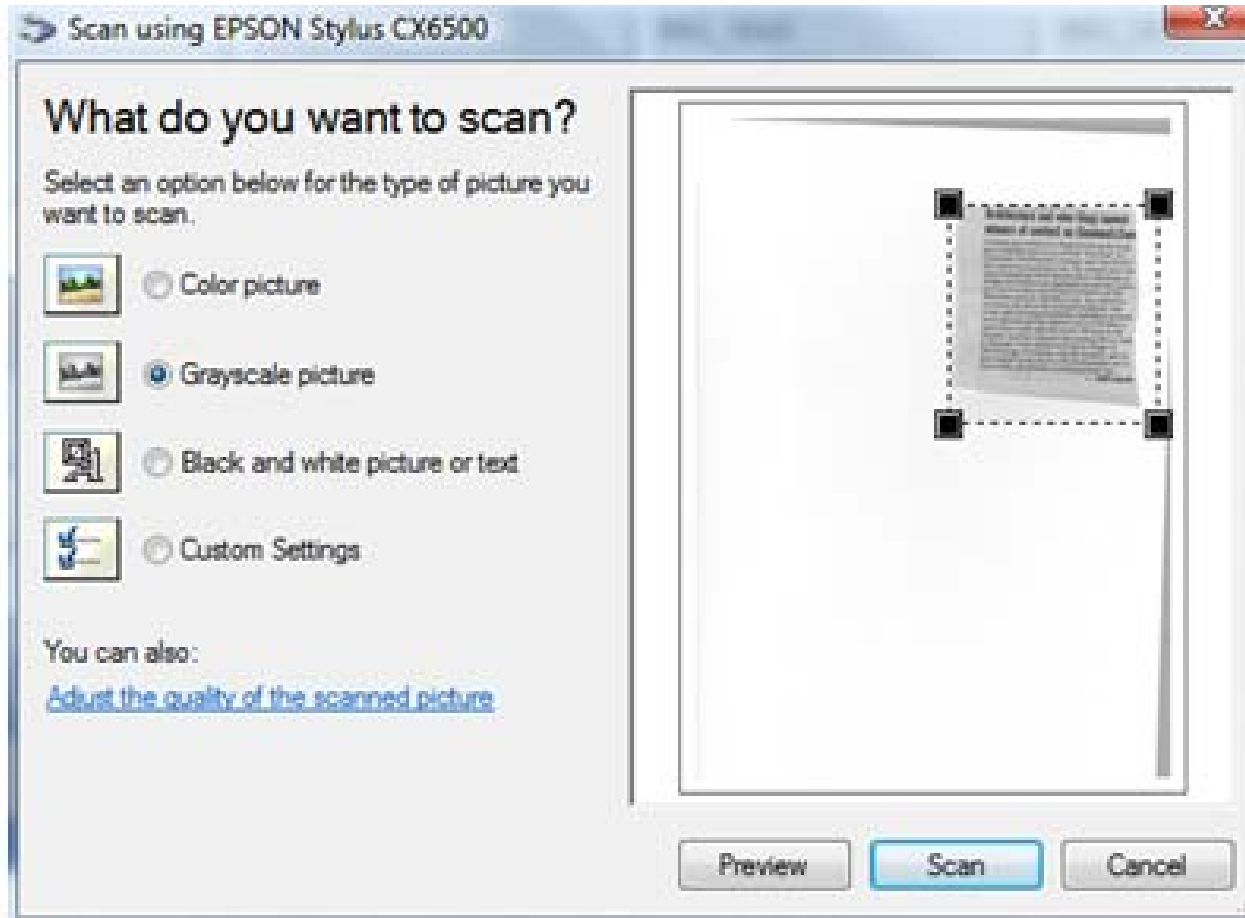
The *Scan Using ...* dialog box opens. Select the option for the type of photo you wish to scan.

Tip: You may adjust the quality of the scanned images by clicking **Adjust the quality of the scanned image**. The *Advanced Properties* dialog box lets you adjust contrast, brightness, resolution, and type of photo.



Tip: You may adjust the quality of the scanned images by clicking **Adjust the quality of the scanned image**. The *Advanced Properties* dialog box lets you adjust contrast, brightness, resolution, and type of photo.

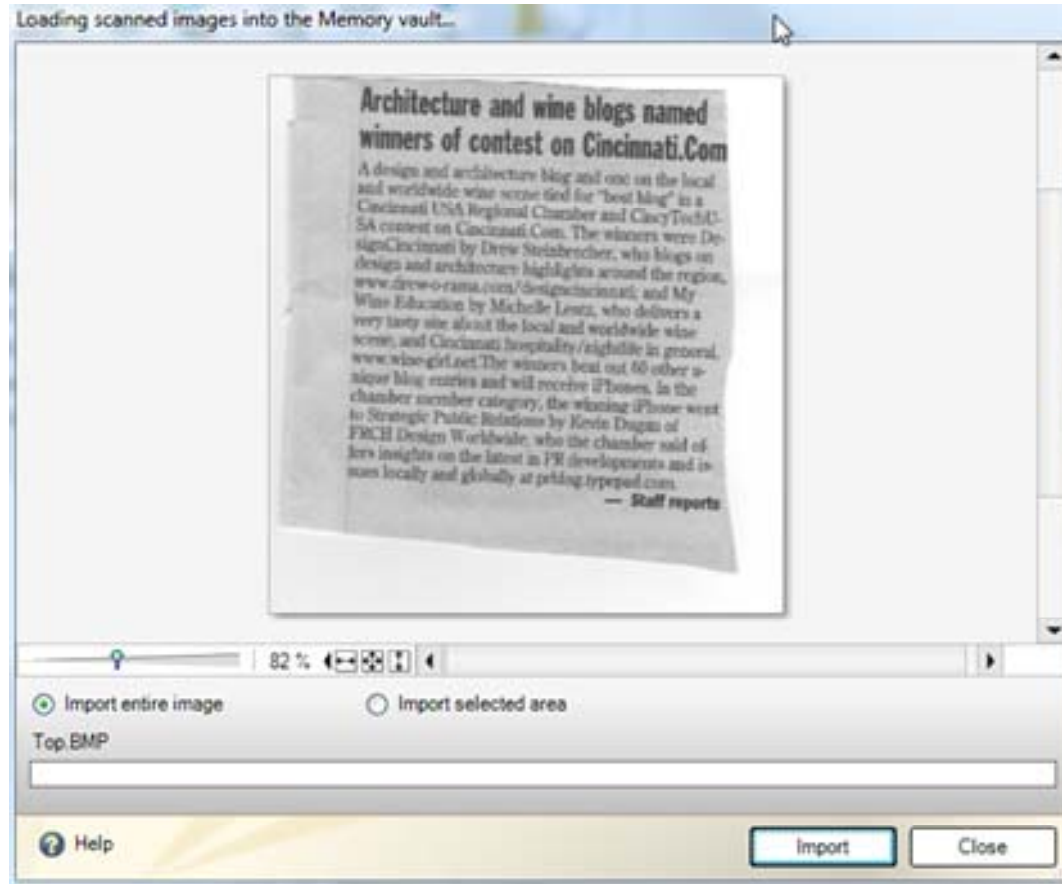
Click **Preview**. The scanner will preview the items you wish to scan.



Once you are satisfied with the preview, click Scan.
The images will be scanned and appear in the *Loading Scanned Images* dialog box.

Import the Entire Image

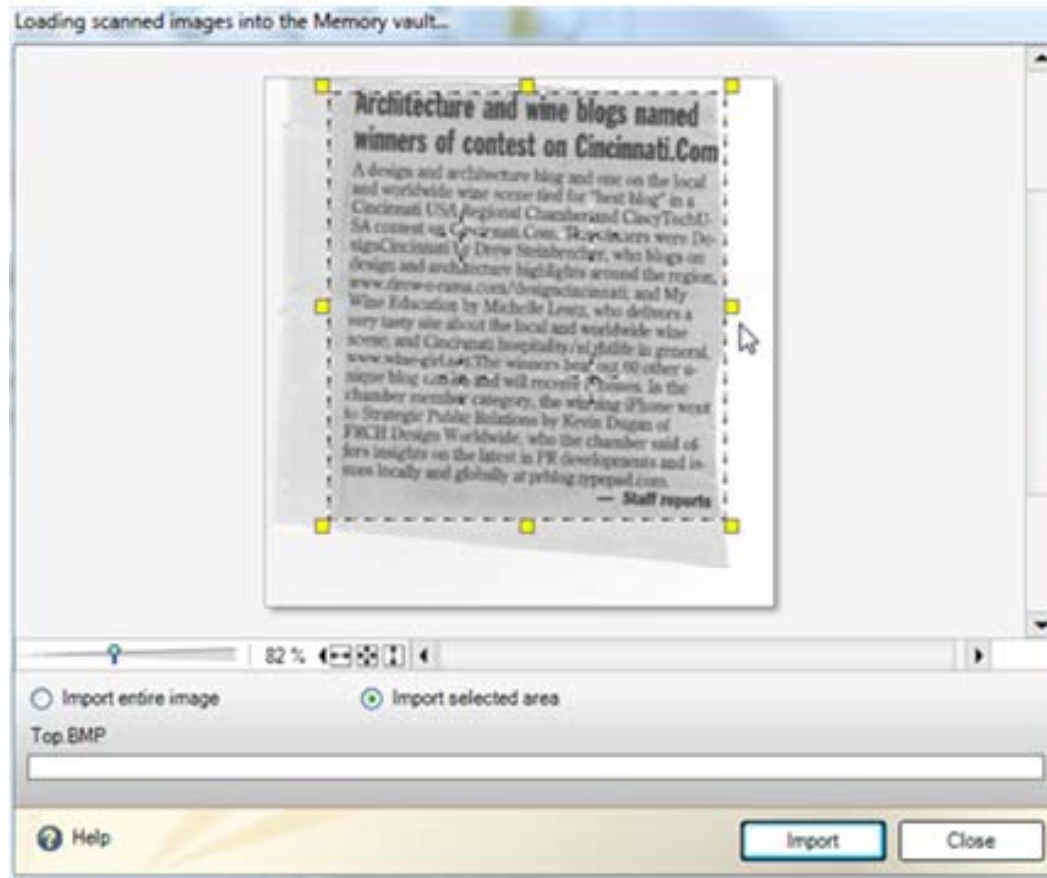
In the Loading Scanned Images dialog box, click the radio button for Import entire image.



Click **Import**. Memory Manager imports the image.
The software displays a message confirming the import.

Import Selected Areas

In the *Loading Scanned Images* dialog box, click the radio button for Import selected area. Arrange the selection box on the portion of the image you wish to import.



Click **Import**. Memory Manager imports the image. The software displays a message confirming the import.