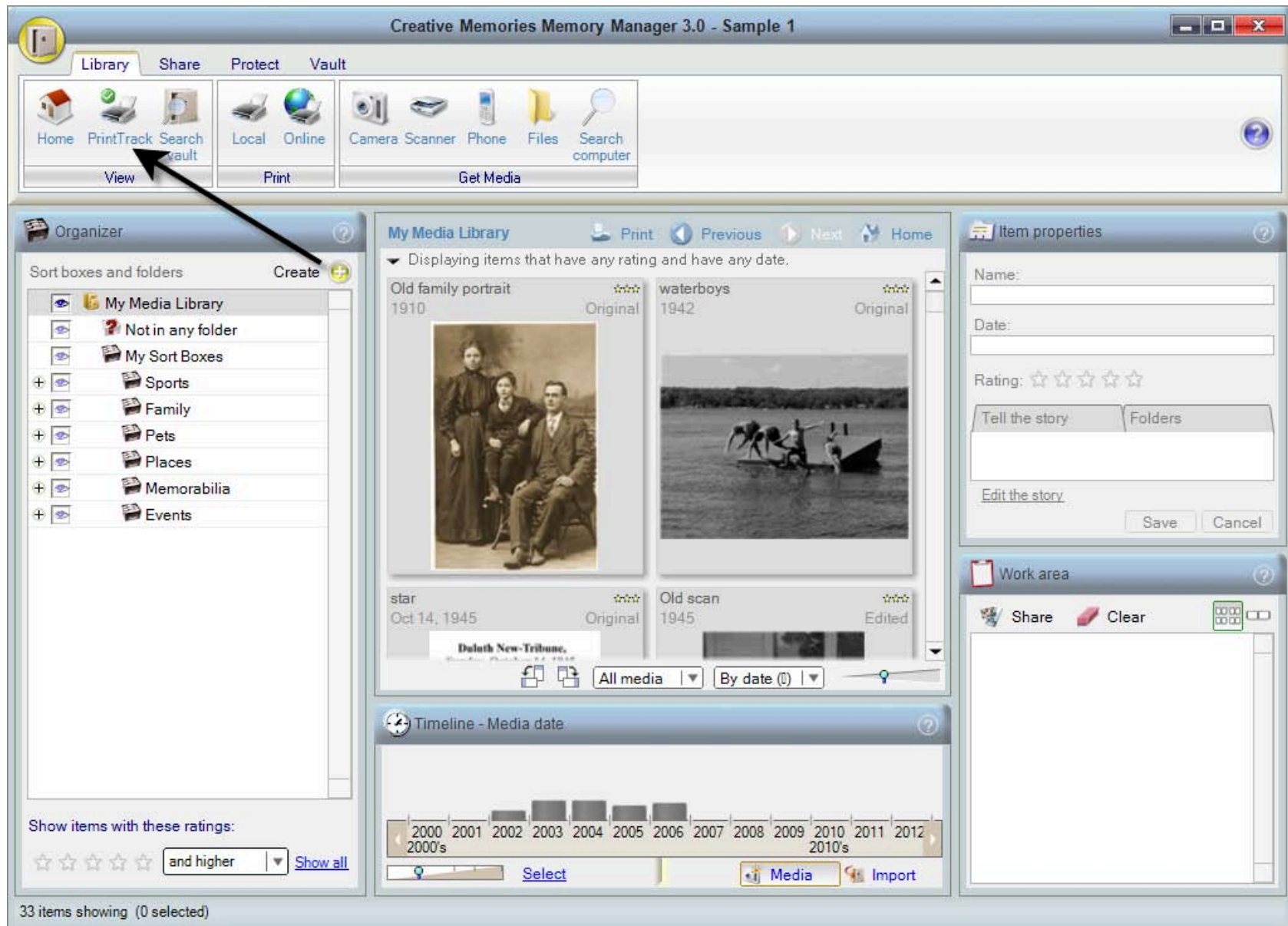
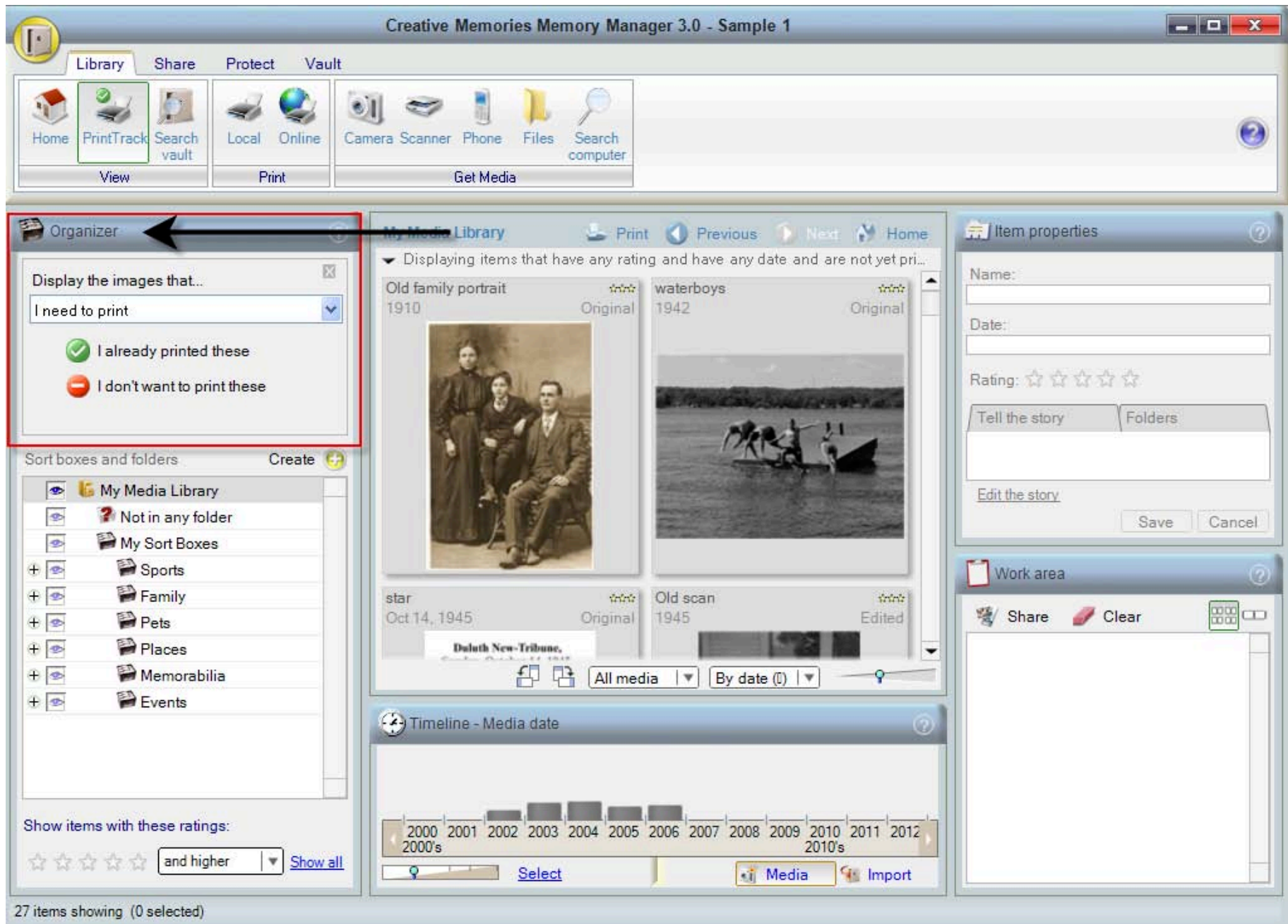


Memory Manager will track which photos you've printed. You can see in the PrintTrack view which photos have been printed and which ones have not. This is especially helpful when printing a large number of photos.



To view PrintTrack, click on **PrintTrack** from the View section of the Library ribbon. The Organizer panel will then change to PrintTrack view.



The PrintTrack view offers three display options in its drop-down menu: **I need to print**, **I have already printed** and **I don't want to print**. Selecting one of these options will allow you to view the photos in that category.

